

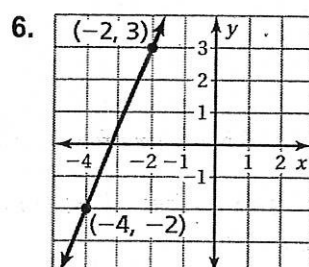
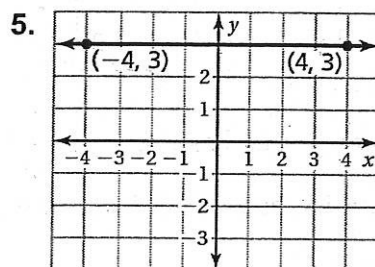
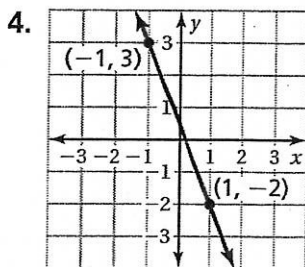
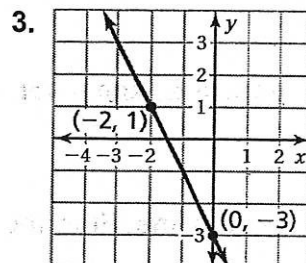
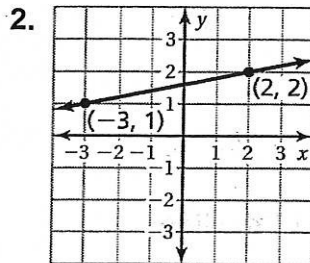
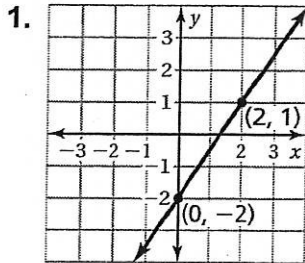


4.2 Puzzle Time

What Did One Poppy Seed Say To The Other?

Circle the letter of each correct answer in the boxes below. The circled letters will spell out the answer to the riddle.

Find the slope of the line through the given points.



7. $(1, 4), (3, -2)$

8. $(1, 2), (1, -2)$

9.

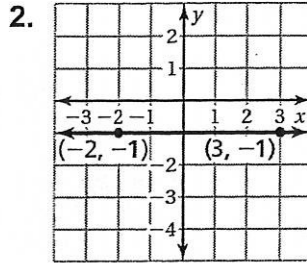
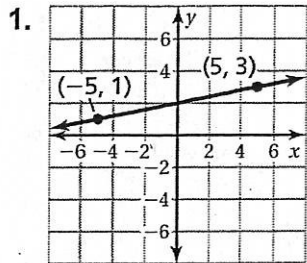
x	-5	-3	3	5
y	15	7	-17	-25

I	T	M	S	A	O	N	H	A	P	L	R	O	M	E	L	S	L
-2	$\frac{2}{5}$	0	$\frac{1}{6}$	$\frac{4}{3}$	$\frac{1}{5}$	-3	$\frac{1}{4}$	$\frac{3}{2}$	$\frac{1}{50}$	1	-4	$\frac{5}{2}$	$-\frac{1}{3}$	2	$-\frac{5}{2}$	5	und.

4.2

Practice B

Find the slope of the line.



Find the slope of the line through the given points.

3. $(1, -6), (-1, 6)$

4. $(-3, -6), (6, 6)$

The points in the table lie on a line. Find the slope of the line.

5.

x	0	2	4	6
y	-4	-1	2	5

6.

x	-4	-1	0	3
y	7	4	3	0

7. A ramp used to remove furniture from a moving truck has a slope of $\frac{2}{5}$.

The height of the ramp is 4 feet. How far does the base of the ramp extend from the end of the truck?

8. The graph shows the cost of a long distance phone call.

- Find the slope of the line.
- Explain the meaning of the slope as a rate of change.
- How much money is added to the phone bill if you talk for 5 extra minutes?
- How many minutes did you talk if the phone call costs \$3?

