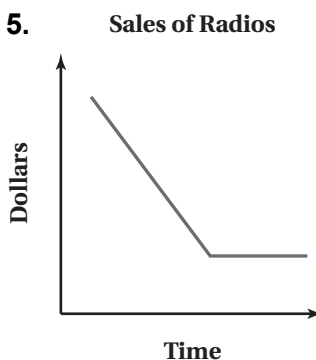
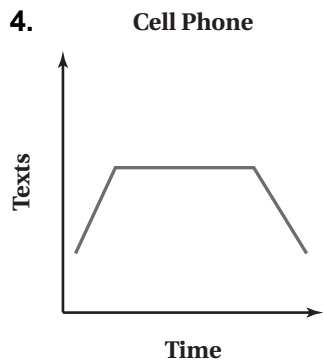
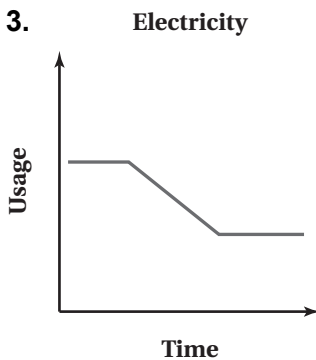
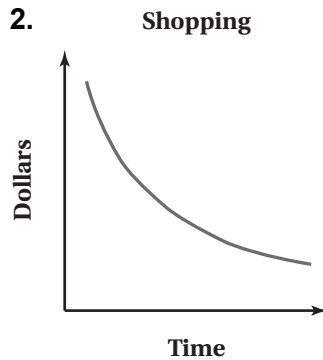
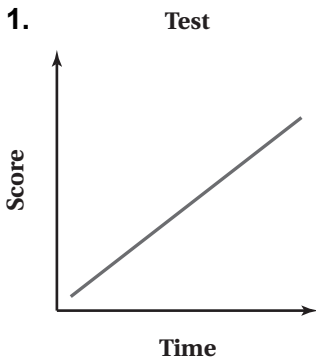


# 6.5 Puzzle Time

## What Has Many Keys That Fit No Locks?

Write the letter of each answer in the box containing the exercise number.

Describe the relationship between the two quantities.



5	3	1	4	2
---	---	---	---	---

### Answers

- P. The amount of money in sales of radios decreased at a constant rate then remained constant.
- K. Test scores decreased at a constant rate.
- L. The amount of usage of electricity was constant, increased at a constant rate, then remained constant.
- N. The number of texts increased at a constant rate, then was constant, and finally decreased at a constant rate.
- A. During the shopping trip, the amount of money increased at an increasing rate.
- I. The amount of usage of electricity was constant, decreased at a constant rate, then remained constant.
- E. The number of texts decreased at a constant rate, then was constant, and finally increased at a constant rate.
- A. Test scores increased at a constant rate.
- B. The amount of money in sales of radios increased at a constant rate then remained constant.
- O. During the shopping trip, the amount of money decreased at a decreasing rate.